

OLYMPUS

Your Vision, Our Future

Wind Turbine Inspection Solutions



At the Heart of Your Process

Wind Turbine Inspection Solutions

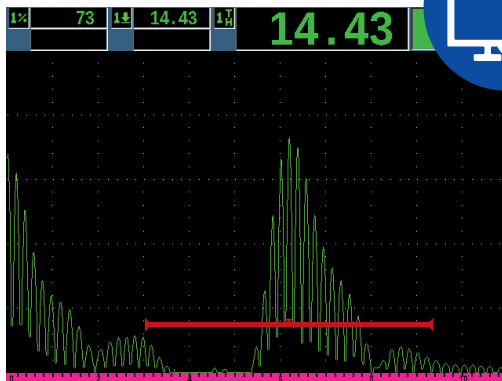
Remote Visual Inspection for Blades

Inspect Blades for Lightning Damage Detection and Quality Control

- Save time with 30 m scopes that enable you to inspect difficult-to-reach areas
- Portable and compact for field and in-line inspections
- Smooth, accurate target approach with precise articulation

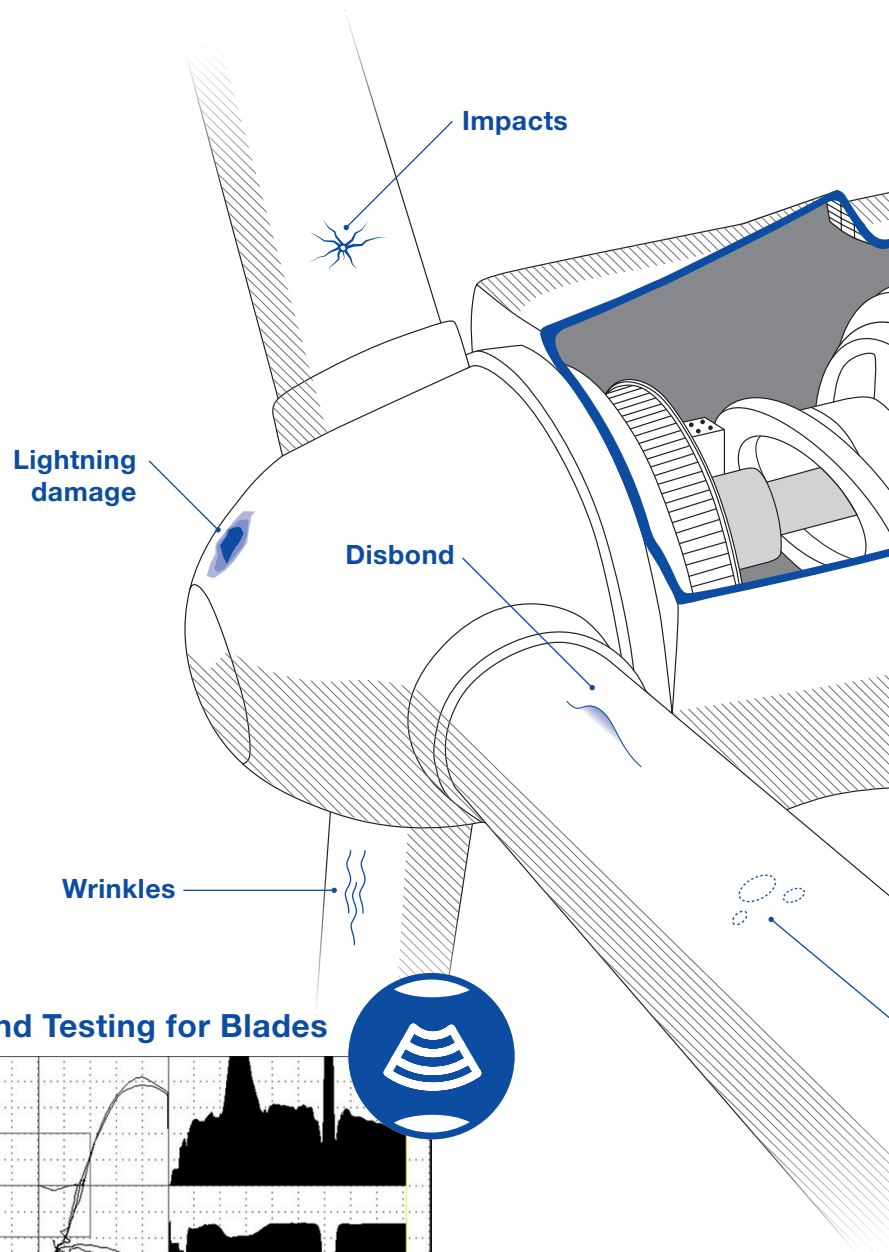


Conventional Ultrasound for Blades



Evaluate Lightning Damage on Blades to Know When Repairs Are Required

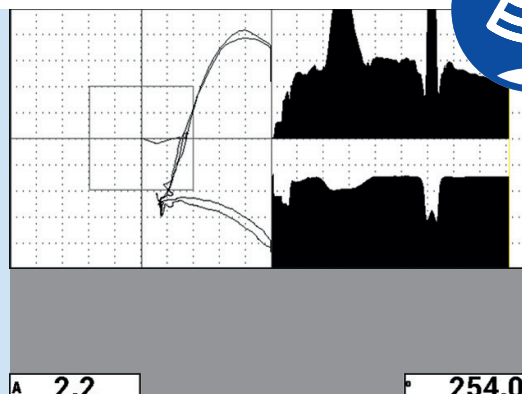
- Rugged, ergonomic instruments designed for challenging inspections
- Full range of probes for detecting and sizing blade defects
- Intuitive interface is practical for both experienced and novice inspectors



Bond Testing for Blades

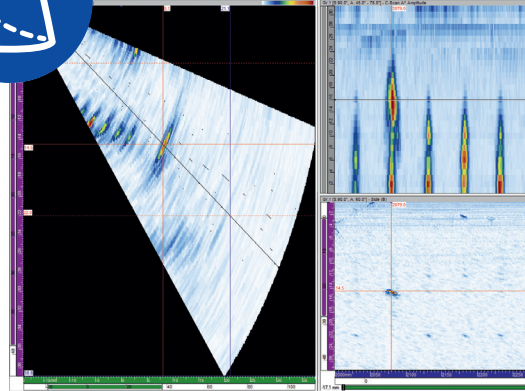
Inspect Blades for Disbonds and Delamination

- Quickly and accurately detect disbonds and delamination in composites
- Automatically recognizes probes with pre-programmed setup
- Lightweight and easy to carry



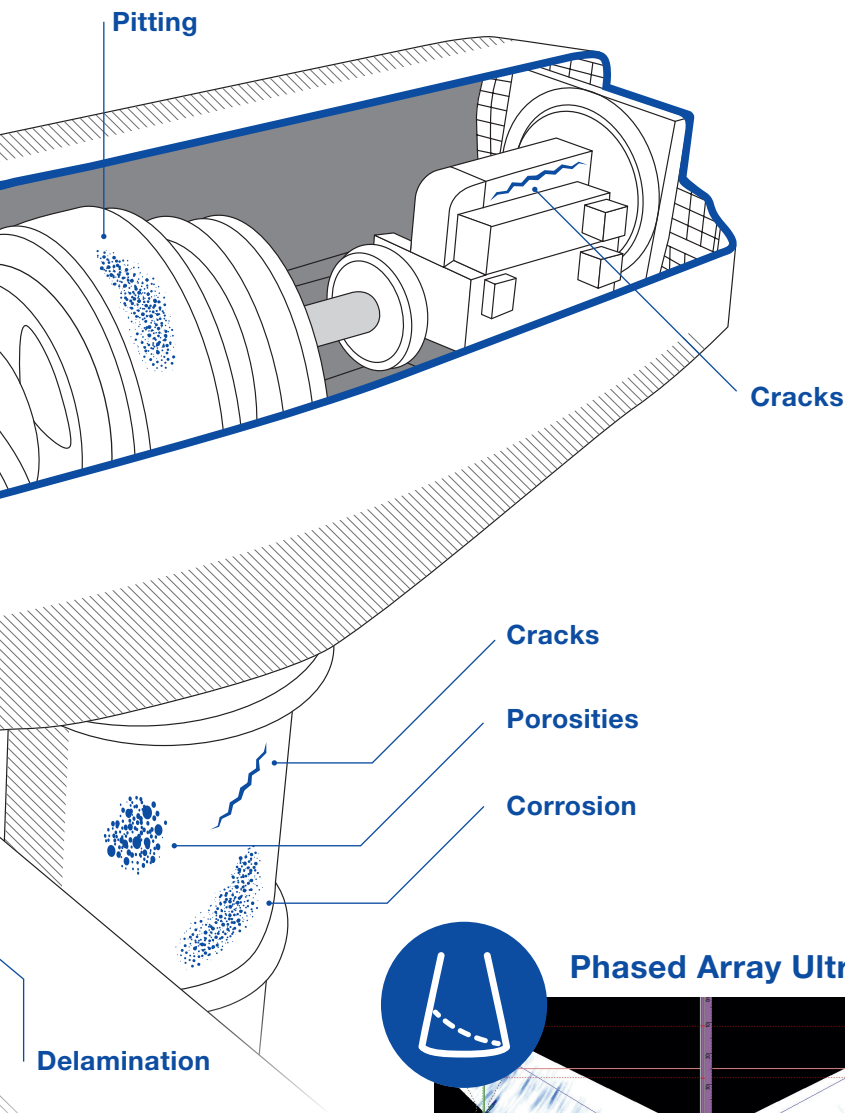


Phased Array Ultrasound for Gearboxes



Locate Defects to Help Prevent Failures, Even When Access Is Limited

- Reduced inspection time compared to radiography
- Immediate, quantifiable results enable on-site analysis
- PA probes direct ultrasonic beams, facilitating inspection of multiple areas



Remote Visual Inspection for Gearboxes

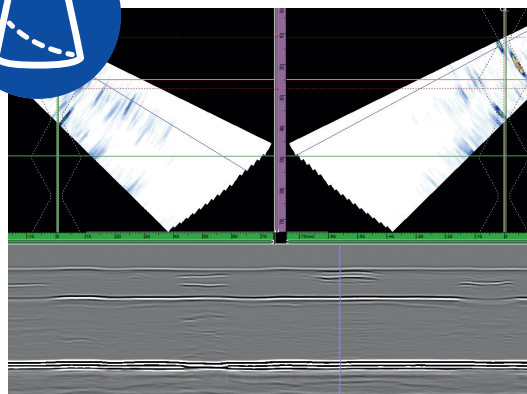


Inspect Gear Teeth and Bearings for Defects from Wear and Erosion, Including Color Change and Pitting

- Oil clearing scope adaptor saves time
- Increase the probability of detection with clear, sharp images
- Compact and lightweight, enabling use in difficult-to-access areas



Phased Array Ultrasound for Tower



Detect Corrosion and Cracks on the Welds of Your Wind Tower

- High-speed detection capabilities facilitate interpretation
- Reduced inspection time compared with radiography
- Immediate results enable you to detect and fix process problems right away

Wind Turbine Inspection Solutions

Best Image Quality and Reliable Results with Olympus Equipment

- Preventive maintenance for your equipment will reduce your shutdown times
- Calibration increase the traceability of your measurement results
- Our service facilities operate at the highest level of quality
- All our technicians undertake continuous training
- Our regional repair centres are ISO 9001, ISO 13485 and ISO 17025* certified
- All our services are carried out to the manufacturer's specifications
- Only original Olympus parts are used by our service personnel



K 2371



Wide range of services

Get in Touch

Choose the ideal service solution for your specific environment and benefit from consistently high service quality. Besides standard services, Olympus offers various additional services to meet individual demands. More details are available from your Olympus sales or service partner.

Customer Service

Olympus Customer Service provides convenient telephone support via a dedicated hotline. A team of operators provides immediate assistance for general queries or can quickly refer callers to the relevant Olympus specialist.

Service Contracts

Our service contracts support your daily work, ensuring the smooth running of your Olympus assets, including proactive calibration recalls. Our contracts can help you plan and limit the service costs as well as reducing administrative work.

 www.olympus.eu/ssd-servicesolutions

- *ISO17025 accredited services only provided in Olympus Czech Group and Olympus KeyMed Regional Repair Centres. Please refer to the Olympus, CIA or UKAS web sites for list of accredited services provided.
- OLYMPUS CORPORATION is ISO9001/ISO14001 certified.
- Illumination devices for microscope have suggested lifetimes. Periodic inspection is required. Please visit our website for details.
- All company and product names are registered trademarks and/or trademarks of their respective owners.
- Images on the PC monitors are simulated.
- Specifications and appearances are subject to change without any notice or obligation on the part of the manufacturer.

OLYMPUS

OLYMPUS EUROPA SE & CO. KG
Postbox 10 49 08, 20034 Hamburg, Germany
Wendenstrasse 14-18, 20097 Hamburg, Germany
Phone: +49 40 23773-0, Fax: +49 40 233765
www.olympus-europa.com

www.olympus-ims.com



E0433495EN · 300 · 05/17 · OEKG · OKM