

Olympus Connector Options

Phased array ultrasonic testing (PAUT) is the nondestructive testing method of choice in many applications. As a leader in the field, Olympus offers an extensive selection of standard and custom connector options for phased array probes for all types of instrumentation.

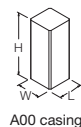
The Olympus OmniScan® connector with its EZ Latch technology continues to be the industry standard. Olympus also provides comprehensive technical support for an ever expanding list of inspection applications for a variety of industries, including aerospace, petrochemical, power generation, and mining. As a global provider of NDT products, Olympus is fully committed to supporting current and future clients in all of their inspection needs.

See the table below for a few examples of standard probes and connectors.

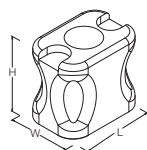


Probe Specifications and Dimensions

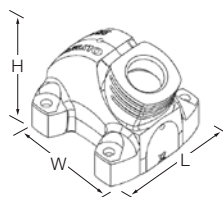
Item Number	Part Number	Connector Type	Frequency (MHz)	Number of Elements	Pitch (mm)	Active Aperture (mm)	Elevation (mm)	External Dimensions mm (in.)			Wedge Type
								L	W	H	
U8330595	5L16-A10	OM	5.0	16	0.60	9.6 × 10	10	23 (0.91)	16 (0.63)	20 (0.79)	SA10
U8331679	5L16-A10	GTZ	5.0	16	0.60	9.6 × 10	10	23 (0.91)	16 (0.63)	20 (0.79)	SA10
U8331620	5L16-A10	ITT	5.0	16	0.60	9.6 × 10	10	23 (0.91)	16 (0.63)	20 (0.79)	SA10
U8331103	5L16-A10	D78	5.0	16	0.60	9.6 × 10	10	23 (0.91)	16 (0.63)	20 (0.79)	SA10
U8331029	5L16-A10	HY	5.0	16	0.60	9.6 × 10	10	23 (0.91)	16 (0.63)	20 (0.79)	SA10
Q3300149	5L16-A10	ZTZ	5.0	16	0.60	9.6 × 10	10	23 (0.91)	16 (0.63)	20 (0.79)	SA10
Q3300180	5L32-A32	OM	5.0	32	1	32	10	40 (1.57)	28 (1.10)	26 (1.02)	SA32
Q3301314	5L32-A32	GTZ	5.0	32	1	32	10	40 (1.57)	28 (1.10)	26 (1.02)	SA32
Q3301313	5L32-A32	ITT	5.0	32	1	32	10	40 (1.57)	28 (1.10)	26 (1.02)	SA32
Q3301311	5L32-A32	D78	5.0	32	1	32	10	40 (1.57)	28 (1.10)	26 (1.02)	SA32
Q3301312	5L32-A32	HY	5.0	32	1	32	10	40 (1.57)	28 (1.10)	26 (1.02)	SA32
Q3300980	5L32-A32	ZTZ	5.0	32	1	32	10	40 (1.57)	28 (1.10)	26 (1.02)	SA32



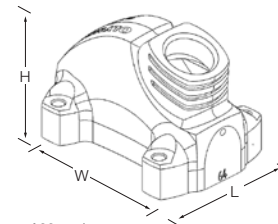
A00 casing



A10 casing



A31 casing



A32 casing

Probe Specifications and Dimensions

Item Number	Part Number	Connector Type	Frequency (MHz)	Number of Elements	Pitch (mm)	Active Aperture (mm)	Elevation (mm)	External Dimensions mm (in.)			Wedge Type
								L	W	H	
Q3300179	5L64-A32	OM	5.0	64	0.5	32	10	40 (1.58)	28 (1.10)	26 (1.02)	SA32
Q3301317	5L64-A32	GTZ	5.0	64	0.5	32	10	40 (1.58)	28 (1.10)	26 (1.02)	SA32
Q3301316	5L64-A32	ITT	5.0	64	0.5	32	10	40 (1.58)	28 (1.10)	26 (1.02)	SA32
Q3301315	5L64-A32	D78	5.0	64	0.5	32	10	40 (1.58)	28 (1.10)	26 (1.02)	SA32
Q3300570	5L64-A32	HY	5.0	64	0.5	32	10	40 (1.58)	28 (1.10)	26 (1.02)	SA32
Q3300981	5L64-A32	ZTZ	5.0	64	0.5	32	10	40 (1.58)	28 (1.10)	26 (1.02)	SA32
Q3300178	5L32-A31	OM	5.0	32	0.6	19.2	10	30 (1.18)	28 (1.10)	25 (0.98)	SA31
Q3300693	5L32-A31	GTZ	5.0	32	0.6	19.2	10	30 (1.18)	28 (1.10)	25 (0.98)	SA31
Q3301310	5L32-A31	ITT	5.0	32	0.6	19.2	10	30 (1.18)	28 (1.10)	25 (0.98)	SA31
Q3300629	5L32-A31	D78	5.0	32	0.6	19.2	10	30 (1.18)	28 (1.10)	25 (0.98)	SA31
Q3301211	5L32-A31	HY	5.0	32	0.6	19.2	10	30 (1.18)	28 (1.10)	25 (0.98)	SA31
Q3300979	5L32-A31	ZTZ	5.0	32	0.6	19.2	10	30 (1.18)	28 (1.10)	25 (0.98)	SA31
U8330145	10L16-A00	OM	10.0	16	0.31	4.96 × 5	5	8 (0.31)	8 (0.31)	23 (0.91)	SA00
U8331685	10L16-A00	GTZ	10.0	16	0.31	4.96 × 5	5	8 (0.31)	8 (0.31)	23 (0.91)	SA00
U8331122	10L16-A00	ITT	10.0	16	0.31	4.96 × 5	5	8 (0.31)	8 (0.31)	23 (0.91)	SA00
U8331724	10L16-A00	D78	10.0	16	0.31	4.96 × 5	5	8 (0.31)	8 (0.31)	23 (0.91)	SA00
U8330193	10L16-A00	HY	10.0	16	0.31	4.96 × 5	5	8 (0.31)	8 (0.31)	23 (0.91)	SA00
Q3300154	10L16-A00	ZTZ	10.0	16	0.31	4.96 × 5	5	8 (0.31)	8 (0.31)	23 (0.91)	SA00

Please note:

Olympus' probes come standard with an OmniScan® connector and a 2.5 m (8.2 ft) cable or can be specially fitted with other connectors and cable length options for all standard and/or custom phased array probes. Custom connectors can be created with supplied details and a pinout.

Available Connectors



Hypertronics™ connector



D78 connector



OmniScan with EZ Latch Technology



GTZ connector



ITT connector



ZTC connector

OLYMPUS SCIENTIFIC SOLUTIONS AMERICAS CORP. is certified to ISO 9001, ISO 14001, and OHSAS 18001.

*All specifications are subject to change without notice.
All brands are trademarks or registered trademarks of their respective owners and third party entities.
Olympus and OmniScan are registered trademarks of Olympus Corporation.
Hypertronics is a trademark of Hypertronics Corporation.
Copyright © 2018 by Olympus.

www.olympus-ims.com

OLYMPUS

OLYMPUS CORPORATION OF THE AMERICAS

48 Woerd Avenue, Waltham, MA 02453, USA, Tel.: (1) 781-419-3900
110 Magellan Circle, Webster TX, 77598, USA, Tel.: (1) 281-922-9300

OLYMPUS NDT CANADA INC.

3415, rue Pierre-Ardouin, Québec (Québec) G1P 0B3, Tel.: (1) 418-872-1155
1109 78 Ave, Edmonton (Alberta) T6P 1L8

For inquiries - contact
www.olympus-ims.com/contact-us



EO440093EN