

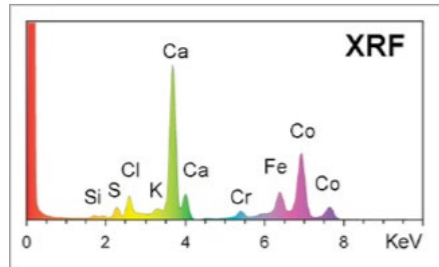
# Geochemistry and Mineralogy Solutions for Mineral Exploration

## Portable X-ray Fluorescence (pXRF) for Geochemistry



### Real-time, quantitative multi-element analysis in the field on:

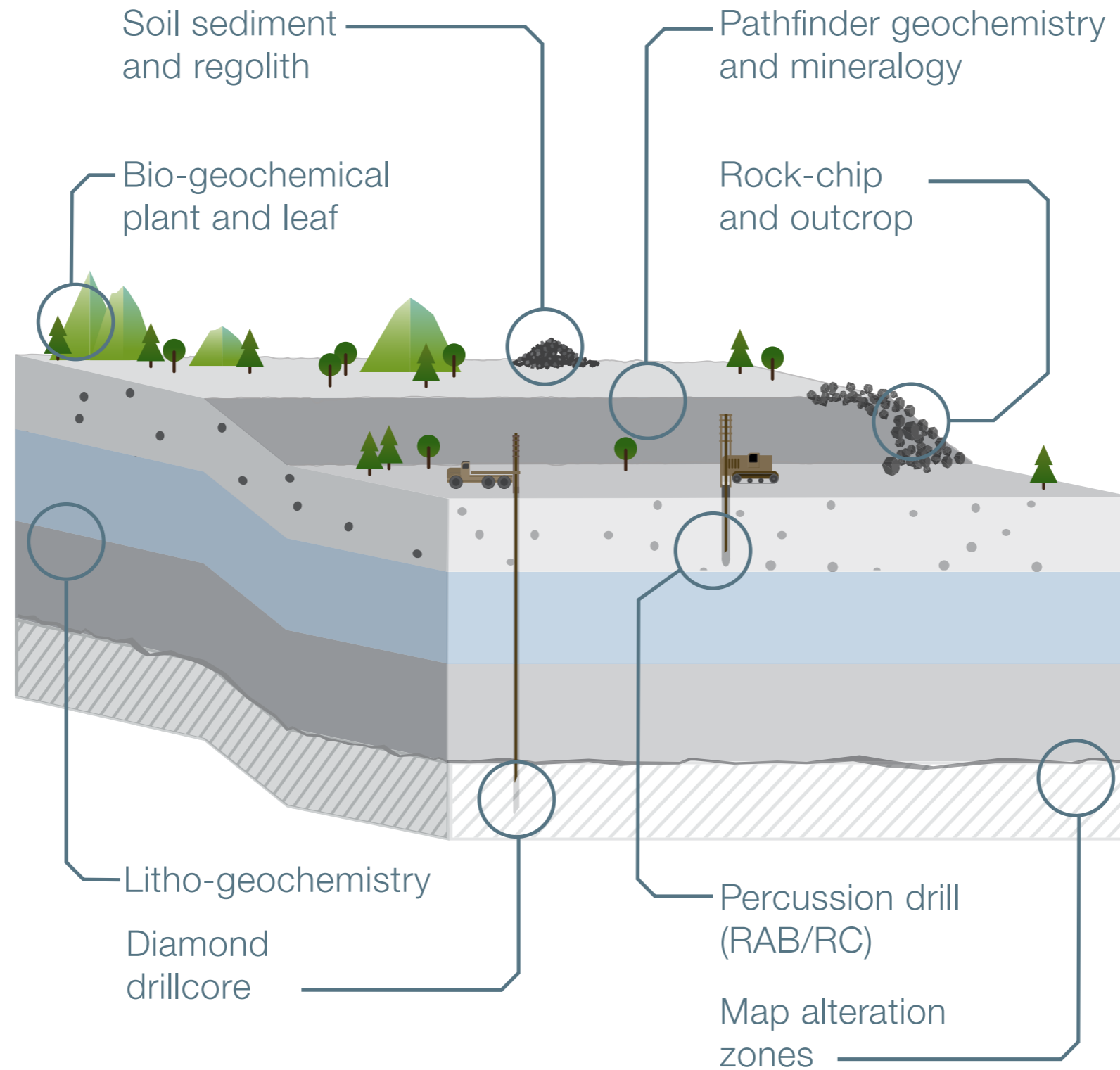
- Soils, sediments, and regolith
- Rock outcrops and chips
- Percussion drill chips (RAB/RC)
- Diamond drillcore
- Lab pulps and rejects



### Use data from pXRF for:

- Real-time decision making
- Project planning and management
- Sampling program strategy
- Pathfinder geochemistry
- Litho-geochemistry and non-subjective logging
- Vectoring toward mineralization

## Exploration Sampling and Analysis Media

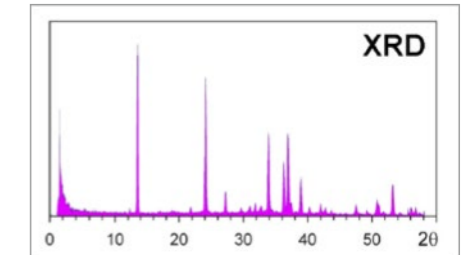


## Portable X-ray Diffraction (pXRD) for Mineralogy



### Bringing answers to the surface:

- Mineral and phase identification
- Quantitative mineralogy
- Alteration mapping
- Vectoring toward mineralization
- Definition of geo-metallurgical properties



## Microscopy for Optical Mineralogy and Petrography



### Routine optical inspection for:

- Mineral and phase identification
- Mineral paragenesis studies
- Deposit and host rock studies
- Definition of geo-metallurgical properties