

# Case Study 14: Internal Corrosion

The GUL Wavemaker<sup>®</sup> utilises wave modes that energise the entire volume of the pipe, therefore it is ideal for the detection of internal corrosion.

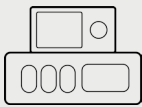
## Job Details

- 6" crude oil line
- Non-painted surface
- Desert terrain with no pipe supports
- Partially buried in sand

## Main Findings

- Over 20m of pipe was inspected from a single location
- Several locations of internal corrosion were positively identified.
- B-Scan prove up confirms the defect severity

Equipment:



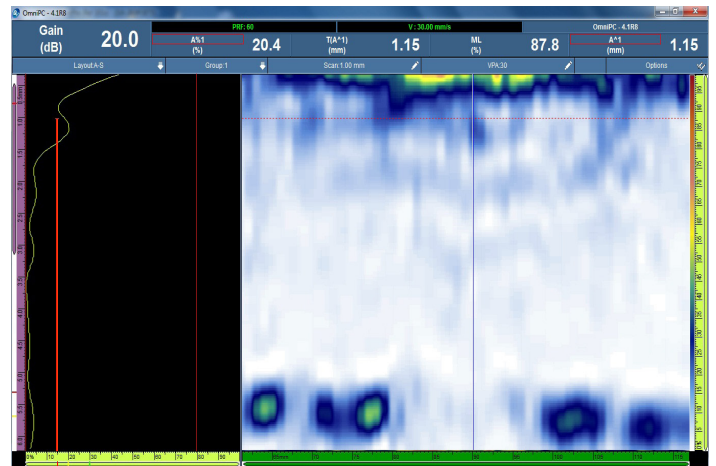
Wavemaker<sup>®</sup> G4



Inflation Ring



An overview of 6" flow line.



B-Scan prove up at the severe defect location which confirms the internal corrosion.

